

# Politicising the debate on urban sprawl: The case of the Lyon metropolitan region

**Eric Charmes** 

ENTPE, UMR EVS 5600, France

**Max Rousseau**

CIRAD, UMR ART-Dev 5281, France - INAU, Morocco

**Maryame Amarouche**

ENTPE, UMR EVS 5600/UMR ART-Dev 5281, France

*Urban Studies*

1–17

© Urban Studies Journal Limited 2020

Article reuse guidelines:

[sagepub.com/journals-permissions](https://sagepub.com/journals-permissions)

DOI: 10.1177/0042098020948794

[journals.sagepub.com/home/usj](https://journals.sagepub.com/home/usj)



## Abstract

The fight against urban sprawl has become an international motto for planners. However, recent urban policies promoting ‘smart growth’ and ‘new urbanism’ are the subject of growing criticism from various scientific disciplines. This paper goes beyond the debate for or against sprawl to examine the political and social issues behind anti-sprawl policies. We show how and why urban compaction can be perceived as a burden or a resource, depending on the different sub-metropolitan territories concerned. These issues are discussed in the case of the second largest metropolitan area in France, the region of Lyon. The paper analyses how the national legislation on urban sprawl and the ‘compact city’ is implemented in the very diverse territories within Lyon’s metropolis and how some of those territories use it to their advantage. It reveals that the resulting compromises are deceptive and raise spatial justice issues. It also shows how compaction or densification are negotiated in the suburbs to preserve the status quo in wealthy municipalities.

## Keywords

built environment, compaction, land use, local government, planning, social justice, sprawl

---

### Corresponding author:

Eric Charmes, ENTPE, 3 rue Maurice Audin, Vaulx en Velin, 69518, France.

Email: [eric.charmes@entpe.fr](mailto:eric.charmes@entpe.fr)

## 摘要

抵抗城市蔓延已经成为规划者的全球格言。然而，最近促进“智慧增长”和“新城市化”的城市政策，正受到各种科学学科越来越多的批评。本文超越支持还是反对城市蔓延的争论，考察了反蔓延政策背后的政治和社会问题。我们展示了城市紧凑化如何以及为什么会被视为一种负担或资源，这取决于所涉及的不同的次城市地区。我们通过对法国第二大都市区域里昂地区的案例研究对这些问题进行了讨论。本文分析了关于城市蔓延和“紧凑城市”的国家立法如何在里昂大都市的各个地区实施，以及这些地区中的一些地区如何利用这些立法促进自己的利益。我们揭示了由此产生的妥协是欺骗性的，并提出了空间正义问题。我们还展示了郊区如何就紧凑化或致密化进行协商，以保持富裕市镇的现状。

## 关键词

建筑环境、紧凑化、土地使用、地方政府、规划、社会正义、蔓延

Received December 2019; accepted June 2020

## Introduction

Today, there is a firm international consensus on anti-sprawl policies. Among the general criticisms that denounce sprawl, three main streams stand out. The first is a stream of critical social geography, inspired in particular by the Los Angeles School (Soja, 1989). Many researchers consider that the Los Angeles metropolis is the epitome of the ills associated with urban sprawl. With its endless suburbs, the Los Angeles model has inspired the emergence of a field of urban research that strives to characterise the social, spatial and political organisation of the suburban and post-suburban landscapes that are taking over cities throughout the world (Güney et al., 2019; Keil, 2017). A second stream of criticism inspired by the issue of sustainable development (Emelianoff, 2007; Urban Task Force, 1999) has put the containment of sprawling cities on the international agenda. Indeed, suburbanisation threatens not only the countryside and, therefore, food security but also ecosystems and global equilibrium by contributing to the climate crisis. Third, the planning community is critical of urban sprawl, which it views as a symbol of unordered growth, generating costly, unpleasant and car-dependent environments (Duany et al., 2000; Herzog,

2014). In general, the professional world of planning praises dense and compact urban centres, which echoes the other two critical streams. These three lines of criticism have coalesced in support of various policies designed to contain urban sprawl and densify already urbanised spaces (Bovet et al., 2018; Fregolent and Vettoretto, 2017; Robert et al., 2019).

The consensus against urban sprawl should be considered carefully. The issues involved are not purely environmental or technical. As urban political ecology demonstrates, they are political, economic and social. It highlights the unequal distribution of the costs and benefits associated with environmental change and shows how changes tend to exacerbate existing inequalities in urban populations (Béal et al., 2011; Heynen et al., 2006; Krueger and Gibbs, 2007; de Souza, 2016). Until recently, little attention has been paid by urban political ecology to suburban, post-suburban and periurban territories. Yet, they are the most affected by the fight against sprawl (Angelo and Wachsmuth, 2015; Keil, 2017). Following on from several recently published studies (Güney et al., 2019; Keil and MacDonald, 2016), this paper aims to

further our understanding of periurban territories – the metropolitan hinterland, where urban and rural land uses mix.

Up until the 2000s, the debate on sprawl was generally pre-empted by libertarian American scholars and pundits, as discussed by Thad Williamson (Williamson, 2010). In a book that is still a major reference for the libertarian view on the issue, Bruegmann (2005) claimed that, historically, anti-sprawl discourses and policies express a more general movement fuelled by class resentment. He suggests that anti-sprawl policies could be analysed as the predictable reaction of the elite, who wish to protect their exclusive lifestyle outside the city and deny access to the masses, who are accused of making the ‘wrong’ choices. In the contemporary period, the gentrification of major urban centres has changed elite discourses on the city. However, the question of class resentment is upheld by critics of new urbanism and smart growth, such as Joel Kotkin. Though less openly libertarian than Bruegmann, Kotkin (2016) clearly advocates suburban expansion. He analyses the current attempts by policymakers to direct growth to city centres in class terms. In his view, promoting a dense city centre is deeply unjust because it ultimately serves the interests of wealthy residents to the detriment of ordinary Americans.

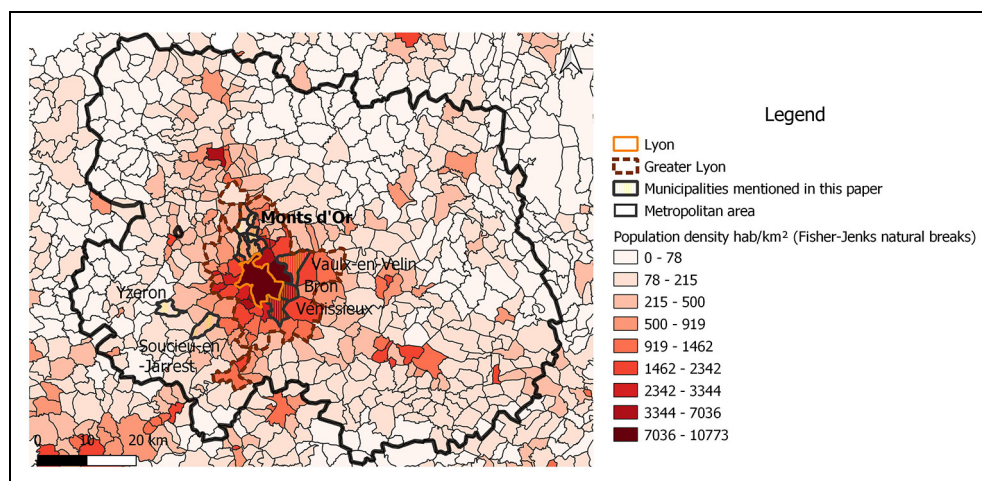
In this paper, our main aim is not to offer a normative perspective on sprawl. Instead, our primary concern is spatial justice, in the same vein as the approach adopted by proponents of urban political ecology. Therefore, this paper does not strive to determine the pros and cons of sprawl but to show how the fight against sprawl and densification policies serves specific interests (Moore, 2013; Quastel et al., 2012). We highlight the political and social stakes underlying the current policies that promote the sustainability of cities. Based on a comparative analysis of the various local policies

implemented in a single metropolitan area, our argument differs from the general critics of the anti-sprawl movements presented above. Its main starting point is that, since compactness and density can be defined in various ways, the local policies they inspire are inevitably diverse (Charmes and Keil, 2015; Mustafa et al., 2018; Rousseau and Harroud, 2019; Touati, 2015). Behind the consensus for the compact city and the fight against sprawl, there is considerable scope for implementing a range of policies. Resulting local policies reflect the fragmentation of large metropolises in a subtle and complicated way. We thus underline the importance of considering the diversity of local contexts because it sheds light on the political and social issues behind the apparently technocratic anti-sprawl policies at local and metropolitan scales.

## Study area and methodology

This paper examines the issues at stake in the context of the local densification and anti-sprawl policies implemented in the Lyon metropolitan region. In this region, Greater Lyon or ‘Grand Lyon’ constitutes the ‘metropolitan core’. Greater Lyon has an inter-municipal body made up of 59 municipalities, 1.4 million inhabitants and covers most of the continuous built-up area (or agglomeration), including low-density suburban municipalities (e.g. the *Monts d’Or* area). Beyond Greater Lyon lie the outer suburbs, which include territories that are commonly known as periurban in France. These latter territories are functionally dependent on the metropolitan core,<sup>1</sup> despite being physically detached from the agglomeration. Most periurban municipalities look like villages or small towns (Charmes, 2019). The combination of periurban rings and central agglomeration constitutes the ‘metropolitan area’ or ‘*aire urbaine*’ (see Figure 1). According to the French National Institute





**Figure 2.** Municipal densities in the Lyon metropolitan area.

Source: INSEE.

political autonomy, especially when it comes to regulating local land uses (Wollmann, 2012). Moreover, many of those municipalities are very small, especially periurban and rural ones. As elsewhere around the French metropolitan core, Lyon's outer suburban municipalities are sparsely populated, being villages in most cases (81% of Lyon's periurban municipalities have fewer than 2000 inhabitants). Inter-municipal cooperation has developed but the effects remain limited. The situation is evolving but, within the scope of the present paper, the only significant exception is for metropolitan cores such as Greater Lyon (Geppert, 2017).<sup>4</sup> This is why, for the sake of clarity, this paper focuses on two local government situations: outer suburban municipalities on the one hand (the policies of which are the focus of section "Fast and furious" sprawl: The metropolis and its periurban hinterland") and Greater Lyon and its member municipalities on the other (the internal relations of which are the focus of section "Densify and conquer": The new challenge of the metropolitan inner suburbs).

This enquiry into the politics of densification and the control of urban sprawl in the

metropolitan area of Lyon is based on a cumulative series of research. The first research began in the 2000s to investigate how suburbanites and periurbanites were taking control of their residential environment (Charmes, 2005, 2011). In the early 2010s, research on densification and compaction policies in the Lyon metropolitan area focused on Greater Lyon suburban municipalities (Charmes and Rousseau, 2014; Rousseau, 2015). Last, ongoing doctoral research that began in 2016 is investigating how anti-sprawl policies are implemented in outer suburban municipalities (Amarouche and Charmes, 2019). All this research was based on qualitative fieldwork. Over the years, more than 130 interviews have been conducted with elected and administrative officials from the municipalities and inter-municipal bodies in the Lyon metropolitan area. The surveys also included a systematic investigation of the different scales of government involved in compaction and anti-sprawl policies, from the state to municipal levels. This multi-scalar research approach is one of the important contributions of this paper.

## **‘Fast and furious’ sprawl: The metropolis and its periurban hinterland**

Periurban municipalities might be expected to oppose anti-sprawl policies designed to limit demographic growth for the benefit of a few central municipalities well served by public transport. As we shall see, the reality is more complex. Periurban territories and their interests are diverse. Some are keen to limit their own growth or stop it altogether and have joined the international bandwagon that supports no growth or slow growth (Purcell, 2000). In Lyon’s case, there has been a convergence between Greater Lyon, which is eager to concentrate urban growth within its territory, and the periurban inner ring municipalities keen to adopt land regulations that severely restrict urban growth. Yet the convergence is deceptive. It does not concern all periurban territories and periurbanisation is a dynamic process. Indeed, the alliance between the metropolitan core and the periurban inner ring does not actually limit urban sprawl, it exacerbates it.

### ***When the inner ring joins the fight against urban sprawl in the name of (periurban) gentrification***

Since the early 1990s, under the influence of a new generation of elected officials from the centre right (Michel Noir, from 1989 to 1995, followed by Raymond Barre from 1995 to 2001) and centre left (Gérard Collomb, from 2001 to 2020), Greater Lyon embarked on the path of economic entrepreneurial development (Galimberti et al., 2014). Its strategy centred on attracting external investments and developing the local economy’s service sector (Jouve, 2001). However, the focus on Lyon’s global competitiveness appears to collide with the growing demographic weight of peripheries beyond

Greater Lyon’s perimeter of influence. The outer suburbs, especially the periurbs, have expanded rapidly. They offer a mix of urbanity and rurality to the middle classes in search of a home that is in direct conflict with the development model promoted by the metropolitan core.

The periurban territories defend their historical model of development, based on individual housing. They are in direct competition with Greater Lyon for resources and development (asset flows, structuring facilities, economic activities). To contend with this, Greater Lyon seized the opportunity provided by the new national legislation designed to encourage densification (especially in areas well served by public transport) and to limit sprawl. As stated above, local authorities have strong incentives to densify. For instance, the ALUR law abolished the possibility to cap the floor area ratio or establish a minimum plot size in local land use regulations. Moreover, these laws strongly discourage the conversion of natural and agricultural land to urban uses.

Paradoxically, at the metropolitan area scale, these laws plus Greater Lyon’s desire to generate growth in its territory via densification met with unexpectedly little resistance. In the periurban municipalities closest to the centre of Lyon, the expansion of built environments usually hits a type of ceiling. Their rate of urbanisation remains very low and natural areas and agriculture are still important features of their landscape. In fact, when households move to a periurban municipality, they are looking for accommodation (usually a detached house), as well as a village-like environment (Fonticelli, 2018) characterised by abundant undeveloped natural or agricultural land with a clear physical separation from the neighbouring metropolitan agglomeration. Thus, around Lyon, as other large French metropolises, municipalities located within the periurban

inner ring – that is, less than a few dozen kilometres from the limits of the main agglomeration – tend to adopt land regulations that restrict the urbanisation of natural and agricultural land. This is especially the case in the numerous small residential municipalities where municipal councils are strongly influenced by residential interests (Fischel, 2004). Indeed, the primary concern expressed locally is to limit urban growth to preserve a village-like environment.

Although periurban municipalities are very diverse and some even have significant urban development plans, few if any want to become part of the suburbs and be swallowed up by Lyon's continuous built-up area. For example, the mayor of Soucieu-en-Jarrest describes his project for its 4500-residents 'village' as follows:

We are on the fringe of the metropolitan area and because of our size and our configuration still rather 'countryside'. We appreciate being a little outside Lyon urban area even if we belong to it [...] The inhabitants, once they are settled in the village, they do not want the village to change, keeping a village aspect. Globally, people rather prefer that the village does not change and they don't want the population to grow. (Interview, mayor, Soucieu-en-Jarrest, 2018)

In the Lyon metropolitan area, the most preservationist municipalities are in the western periurban ring (Amarouche and Charmes, 2019). This reflects the fact that their landscape is more attractive and welcome higher-income households than other periurban municipalities (Bouron, 2019). Indeed, by limiting growth, municipalities restrict supply and raise prices. This ensures a social sorting mechanism. Similar mechanisms have been described outside France (see Fischel, 2004 or Schmidt and Paulsen, 2009). Thus, in the periurban inner ring, fighting urban sprawl is highly compatible with the

main objective of (periurban) gentrification (Bacqué et al., 2016; Tommasi, 2018).

In this context, periurban and Greater Lyon projects are compatible, even if the joint issues of densification and combating urban sprawl mask political rivalries. The inner ring, particularly in the west, views changes in the national legislation as an asset to help secure a model based on preservationist land regulations, maintain high real estate prices and ensure social homogeneity for middle and upper-middle classes. This strategy is barely called into question by Greater Lyon, which has a rather indulgent attitude. By closing itself off to urbanisation, the western periurban ring becomes the metropolitan area's 'green lung' (Amarouche and Charmes, 2019), that is, a residential territory for middle and upper-middle classes, as well as a recreational area that helps to promote Lyon's quality of life to new enterprises and professionals.

Relations with the state<sup>5</sup> are not strained either. The state intervenes in the Lyon context through its legislative output, as well as through a specific planning document: the spatial planning and sustainable development directive (*Directive territoriale d'aménagement et de développement durable* or DTADD). The directive applies to a large portion of the Lyon metropolitan area. It stipulates the need to fight urban sprawl, in accordance with current legislation. It sets objectives that converge with those of Greater Lyon and the periurban territories: preserving the patrimonial landscape, maintaining agricultural areas and reducing soil sealing (Amarouche and Charmes, 2019). Many periurban municipalities are quite happy with being assigned a role to preserve the green belt around the metropolis, despite their complaints about state interference in their affairs. They have readily adopted the discourse on the need to fight urban sprawl at their local level. They claim that they can

no longer create new residential neighbourhoods because of this directive and also partly because of the cost of collective facilities and public services (e.g. bus networks).

### *When the struggle with urban sprawl pushes out modest homebuyers*

The emerging compromise between the metropolitan core and its periurban rings is deceptive. Periurban spaces are diverse and, above all, periurbanisation is a dynamic process. Thus, limiting urbanisation in the inner ring simply displaces it. Young families with children, looking to buy a detached house, are forced further afield because property in the inner ring is unaffordable (Charmes, 2011; Wiel, 2010). Similar dynamics have been described outside France (see Schafran and Wegmann, 2012). Cheaper plots of land are available beyond the periurban inner rings, where rural municipalities are pleased to welcome new families to revitalise their village and boost the number of children at the local school. In addition, property owners stand to gain as the value of their land increases. In Lyon's second periurban ring, building land is commonly worth a hundred times more than agricultural land. Furthermore, and perhaps more importantly, the state's sectoral policies are somewhat contradictory. The urban sprawl, which planning and development regulations seek to contain, has been exacerbated by the homeownership policies that encourage low-income households to buy new homes – which is only possible if they move a long way from the metropolitan cores (Charmes and Rousseau, 2014).

Indeed, recently periurbanised municipalities are quick to adopt a restrictive pattern of urban development and land-use policies (Charmes, 2011). It does not take long for increased market pressure, combined with the fear of urbanisation, to drive mayors to modify their policy and sharply reduce the

rate of population growth. For instance, the municipality of Yzeron grew rapidly when it was being incorporated into Lyon's periurban ring. Its population increased by over 30% from 750 in the mid-1990s to 1000 at the end of the 2000s. This growth was well received because, as the mayor explained, it helped 'stabilise business' (including the school). Yet, the growth rate is now being called into question. Once the cap of 1000 inhabitants was reached, the adoption of a new local land use plan (PLU) in 2008 provided the opportunity to take steps to curb population growth. At the last count in 2017, Yzeron's population was still just above 1000. Although Yzeron became part of Lyon's periurban ring, it has maintained its village-like character and avoided being swallowed up by the sprawling suburb. Now people looking for a buildable plot must go further afield.

Therefore, cities expand in waves: a new periurban ring is added to an older ring when the latter closes itself off to urbanisation (Wiel, 2010). Thus, Lyon's area of influence has spread outwards into municipalities that, until recently, were very rural and relatively inaccessible because of the relief. It is easier to urbanise the metropolitan area's outer margins because they are located outside the zone covered by the state's spatial planning directive (the DTADD). In addition, metropolitan actors do not generally perceive the city's outer margins as strategic territories. They are considered rural areas and some policies even encourage their development to combat rural depopulation. The evolution of Lyon's metropolitan areas between 1999 and 2010 is telling. Despite the anti-sprawl legislative framework, it gained more than 200 municipalities in a decade, from fewer than 300 to more than 500, largely as a result of periurbanisation. This phenomenon is not specific to Lyon. At the national scale, the areas covered by periurban rings around large cities (offering more



than 10,000 jobs) expanded by 39% in the same period (Floch and Levy, 2011).

This has a major impact on lower-middle and stable working classes (hereafter called modest households). Those wishing to purchase a single-family home around Lyon either have to abandon the idea or move further away. The latter choice has high individual and collective costs, as it involves longer commuting distances. Although employment is growing within periurban rings, it does not match the population growth. In 2017, greater Lyon was home to more than 73% of all jobs within the metropolitan area, with a share of only 60% of the population.<sup>6</sup> Given the extremely poor public transport services in periurban rings, especially the outermost one, people often travel the extra distance by car. This has not only a significant environmental impact but also a social one. For a household with two working adults, the additional cost of a 10 km increase in commuting distance is approximately €200 per month for home-to-work commutes alone. Yet, in 2017, in the Lyon region, the net monthly income of one-fifth of housebuyers was below €2400 (per household) or double the minimum wage (Mouillart and Vaillant, 2018). This point should be stressed: the problems associated with spatial expansion of periurbs are not merely environmental, they are also social. They call into question the right to mobility, as well as access to employment (Cochez et al., 2015).

Undoubtedly, the development of Lyon's outer periurban ring goes some way to answering the thorny question of homeownership for modest households. Nevertheless, the extension of the metropolitan area comes at a high cost for the working people who live there. Some people consider that this cost is unjust in comparison with large metropolitan centres that have cheap public transport. Indeed, the

idea is spreading in France that there is a strong political bias in favour of large metropolitan centres when it comes to public policies, be it healthcare, education or transport (Bouba-Olga and Grossetti, 2019). Whether or not this bias is genuine is a tricky issue. However, the perception of bias is growing and partly explains the high far-right's election scores in the outer periurban rings (Charmes, 2019). Ultimately, this issue had a major impact on the Yellow Vest uprising. The revolt started in November 2018 after the government announced an 'eco-tax' on car fuel. The price rise, albeit limited, was the last straw. The resulting discontent triggered a massive revolt, which, at least initially, was much more apparent in the outermost periurban rings than elsewhere (Depraz, 2019; Genestier, 2019).

### **'Densify and conquer': The new challenge of the metropolitan inner suburbs**

Periurban territories are being allocated an increasing share of fiscal and 'social' resources through their gentrification programmes. Consequently, Greater Lyon must accept changes to its urban morphology (i.e. densification) to pursue its territorial development plans. This is a complex process and not simply a technical solution that stems from the moral imperative of sustainability (Quastel et al., 2012; Rousseau, 2015). To decipher this, our analysis 'zooms in' on the metropolitan inner suburbs (located within Greater Lyon limits), focusing on the variations in local densification policies.

The densification strategy adopted at the metropolitan scale was supposedly designed to rebalance the agglomeration's urban form. Yet the strategy has failed to reverse the historical segregation between the largely upper-middle-class western suburbs and

predominantly working-class eastern suburbs (Authier et al., 2010). Locally applied policies are quite conservative. Indeed, Greater Lyon's authorities have not been able to significantly change the very diverse political, social and economic municipal configurations. Lyon's suburbs have negotiated forms of densification that could preserve their profile.

### *Western suburbs: Controlling densification to preserve the social status quo*

The densification that national legislation has imposed on all territories constitutes a greater political threat to mayors in western municipalities than in eastern municipalities. This difference is primarily related to the different social composition in the two areas. The frequent revolts in the vicinity of East Lyon's high-rise tower blocks, home to low-income residents of North-African origin (Dikeç, 2011), caused moral panic among detached homeowners, thus, increasing their hostility towards a dense urban form. This resistance occurs in low-density residential neighbourhoods, where land-use regulations cannot be relaxed without sparking defensive reactions. In West Lyon, residents have successfully managed to block even limited densification. With such severe opposition, elected officials from western municipalities often agree on a compromise with Greater Lyon that involves limited densification: building small collective housing units in old built-up town or village cores. The idea is to use a small town design such as the one commonly promoted by advocates of suburban smart growth or new urbanism (Duany et al., 2000).

Greater Lyon accepted this compromise for two main reasons. First, its centre-left president, Gérard Collomb, needed the support of the West Lyon centre-right mayors to be elected (Galimberti et al., 2014). Second, public infrastructure, especially

transport, is underdeveloped in West Lyon after decades of local planning policies that promoted low-density housing and car mobility. Therefore, major urban development would have been far more expensive than in East Lyon, as we will see below.

The West Lyon mayors recognise that the densification of their old centres has some advantages. First, it responds to a real demand from older local residents who wish to move closer to local services and shops. Second, it helps stabilise local commercial structures. Third, it boosts the municipality's fiscal resources. However, over and above these public arguments, targeting old centres for densification constitutes a hidden compromise: in exchange for limited densification in the old centres, low-density residential neighbourhoods preserve a status quo. By accepting a densification plan restricted to small collective buildings in their old centres, western municipalities are making a gesture of goodwill. The Greater Lyon authorities can then claim that the 'burden' of densification weighs equally on western and eastern municipalities.

In response to the legal requirements to develop social housing, new densification projects often include up to 40% of social housing units, especially in the west, where municipalities have long been reluctant to accommodate low-income households. This densification is thus clearly associated with social downgrading (Fonticelli, 2018) and sparks opposition in well-off suburbs. Yet, the status quo in West Lyon is not genuinely under threat because mayors can control not only the form of construction but also the profile of incoming populations (Desage et al., 2014). Mayors play an important role in the allocation of social housing. Consequently, the social housing units built as part of the new programmes often serve to accommodate young people who work for the municipality, or relatives of people who already live in the municipality. Indeed, there

is a high demand for social housing among young households, including from the middle classes, because of the rise in real estate prices since the end of the 1990s. Mayors often mention this to their reluctant constituents to justify why the social housing thresholds imposed by the 2000 SRU law should be respected. As a real estate developer stated about outer western suburban municipalities:

When we say that it is necessary to produce social housing, everyone thinks that we will bring people from the 'Minguettes' [a district in Vénissieux, a deprived suburb in East Lyon, see Figure 1] or La 'Duchère' [a deprived neighbourhood in Lyon] into their municipalities. But, social housing in suburban municipalities is often occupied by young couples starting out in life. So, it's children of families who already live there. (Interview, real estate developer, Nexity, 2019)

The sine qua non condition for densification is that residential municipalities in West Lyon have demonstrated their capacity to regulate the population that moves into the new housing units. Although the complaints filed by residents' associations rarely succeed, they can disrupt construction projects because of the additional costs incurred by the delays. Therefore, the tight political control of densification allows for a compromise that is acceptable to all parties. It limits the social impacts of morphological change in western municipalities.

In short, the suburban municipalities in West Lyon perceive the obligation to densify as a threat: they risk losing their 'village character' to make way for the big city. In other words, as a result of intensifying urbanisation, they risk losing their status as purely residential, socially (and racially) homogeneous and relatively closed spaces. However, the compromise reached between Greater Lyon and the mayors in West Lyon allows all parties to claim that they have respected their obligations regarding

densification, at the same time as preserving the basics: a relative status quo in urban and social terms.

### *Eastern suburbs: Promoting densification in the name of growth*

By contrast, densification has generally received far more support from the municipalities in East Lyon's working-class suburbs. There are two reasons for this. First, densification increases the demand for public facilities (schools, transport, etc.). Over the last three decades, several eastern municipalities have experienced population decline, mainly as a result of deindustrialisation, pauperisation and loss of appeal for new households (Authier et al., 2010). As a result, they have the public facilities required to meet the demands of a new population. Thus, densification is a way to make their facilities profitable once more. This is the case for Bron, an eastern suburban municipality that lost 16% of its population between 1975 (when its population peaked at almost 45,000) and 1999, as the mayor explains:

We have facilities for more than 40,000 people. The population has fallen to 37,000. We can densify. On the contrary, we must prevent further population decline, as this would jeopardise the city's facilities which were designed for 40,000 inhabitants. (Interview, 2011)

Second, several mayors in East Lyon perceive the modification of the urban form as a lever for social change: densification helps attract members of the middle classes and transforms the characteristics of the local population, which they consider to be too poor and not sufficiently white. Here, the incentive to densify, as expressed by elected officials in declining industrial cities, reflects the desire to promote social upgrading by encouraging the settlement of middle-class households (Rousseau, 2009). In addition,

the municipalities in the eastern suburbs tend to be left-wing. Up until 2020, the mayors in these municipalities belonged to the political majority governing Greater Lyon. Thus, they had access to community resources to stimulate densification through the public transport policy, for instance, as demonstrated by the expansion of the subway and tram networks towards lower-class inner suburbs, including Vénissieux and Vaulx-en-Velin (Lévêque, 2018). It is indeed remarkable that no similar expansion has taken place towards the western suburbs. With this support, the mayors in the East accepted the injunction to densify imposed by Greater Lyon. For example, the mayor of Vaulx-en-Velin, one of Lyon's poorest suburbs, stated in the municipal newsletter that 'there is [a] need for housing in the city and we reject the logic of urban sprawl' (*Vaulx-en-Velin Journal*, April 2013).

For the elected officials and municipal technicians, the social transformation that results from modifying the urban form makes it possible to 'break ghettoisation'. This term is frequently used by French politicians in cities where poverty is widespread. Municipalities, such as Vénissieux and Vaulx-en-Velin, are taking advantage of the rapid increase in real estate prices in the centre of the agglomeration with a view to breaking ghettoisation. They have thus targeted a specific population: 'First-time buyers with no children, young, hailing mainly from East Lyon' (Interview, Urban Planning Department in an eastern municipality, April 2011). Those targeted are not affluent residents from the rest of Greater Lyon but young, upwardly mobile households from East Lyon. In that case, the link established by the national legislation between densification and social mix is reversed. The aim of the densification policy is not to attract the working classes to middle-class neighbourhoods but quite the opposite.

Thus, in the working-class suburbs, the spaces of urban renewal differ markedly from the tower blocks that long dominated their urban landscape. Tower blocks have a negative image associated with 'communitarianism', poverty and insecurity. On the contrary, urbanisation is now driven by large private real estate groups that reproduce a dense urban form, designed to attract the middle classes. Vénissieux is a good example of this. A working-class city, it developed during the first wave of suburbanisation, when the population went from 15,000 in 1946 to 75,000 in 1975. For several years, most of its residents worked in the local factories. The factory closures in the 1970s caused major social problems. The city's population declined rapidly, falling to 55,000 by 1999. Vénissieux experienced a sort of French white flight. Residents who left the municipality were primarily those who could afford to purchase a home. In the *ZUP des Minguettes* – the well-known scene of several urban riots that symbolises 'the problem of the suburbs' in France – several tower blocks were destroyed to make room for small collective housing projects supported by the municipality. The re-densification observed in Vénissieux since the mid-2000s (the city has regained 9000 residents) was promoted by a communist municipality that took advantage of Greater Lyon's transport policy, with the opening of a new tramway line in 2009, linking Vénissieux directly to the centre of Lyon. The municipality negotiated financial support with the National Urban Renewal Agency (ANRU) for a major project along this line.

Therefore, the densification of the eastern suburbs allows the declining post-industrial eastern suburbs to 'move upmarket' (Rousseau, 2014). The main problem caused by this change for the lower-income groups is related to the demolitions and subsequent rehousing programmes. The residents of the

public estates have been relocated to neighbourhoods that they did not necessarily choose, where rents are higher and flats smaller (Lel  vri  r, 2015). The resulting discontent is channelled through the social services in the Eastern municipalities and has not led to the creation of a structured political opposition. More generally, the densification of Lyon's eastern suburbs is facilitated by the lack of resident mobilisation. This inertia contrasts with the situation in the western suburbs. It should be noted, however, that some movements against densification have been organised in East Lyon. These movements originate mainly in old village cores and residential islets established between tower blocks (Rousseau, 2012). Thus, beyond the rift that divides eastern and western suburbs, the main opposition to policies of urban compactness stems from a specific type of urban fabric: residential neighbourhoods.

### **Conclusion: Politicising the debate on urban sprawl**

As this paper demonstrates, anti-sprawl and compaction policies are by no means purely technical and consensual, despite their appearance at the national policy level. When considered at local scales, anti-sprawl and densification policies appear to be highly political (Moore, 2013). Cases presented in this paper are in line with other urban political ecology studies. They show that a sustainable urban environment is not merely an ecological matter. Within periurban territories, nature preservation is deeply interwoven with urbanisation processes (Keil and Macdonald, 2016; Sandberg et al., 2013). It also has very different social and political implications depending on the local context (de Souza, 2016). The same applies to densification in the suburbs, which takes various forms, for example, the densification of village cores rather than the transformation of neighbourhoods of detached houses

(Charmes and Keil, 2015; Touati, 2015). Anti-sprawl policies may also be offset by other national policies, including those that support the residential construction sector and favour access to homeownership. In this framework, local choices are possible and they reflect political, economic and social values. Furthermore, in geographical terms, the benefits of these choices are unevenly distributed and interlinked.

In Lyon's periurban municipalities that are close to the metropolitan core, anti-sprawl policies reflect the residents' desire to limit growth and control the social characteristics of the local population. The resulting policies qualify as exclusionary zoning (see, e.g. Schmidt and Paulsen, 2009). At the same time, they help transfer the demand for housing away from the metropolitan core. The fight against urban sprawl and the corresponding preservation of undeveloped land around metropolitan cores restrict building rights in sectors where demand for housing is high and real estate market operators would willingly intervene. The current densification projects are unlikely to match housing needs. The structural housing deficit will probably continue and be absorbed, at least in part, by expanding the metropolitan area further into the metropolitan region (Charmes and Rousseau, 2014). These observations recall the debate about the effects of London's green belt (Gant et al., 2011) and the criticisms of North American pro-sprawl pundits and scholars, as mentioned above (e.g. Bruegmann or Kotkin). In any case, spatial justice is a major concern, whatever one's political tendencies might be. Modest homebuyers bear the brunt of anti-sprawl policies. Real estate market dynamics and periurban centrifugal forces make the situation difficult for them, exacerbating their precarity.

Within the metropolitan core, the responses to densification policies vary, depending on the municipalities' economic,

social and political specificities (Quastel et al., 2012). They may be perceived as a threat in terms of social downgrading or as a tool for new-build gentrification (Davidson and Lees, 2010). The compromise reached between several West Lyon mayors and Greater Lyon has helped turn densification into a vector to consolidate the residential character of the Monts d'Or municipalities. Similarly, the compromise struck between some East Lyon mayors and Greater Lyon has helped make densification into a vector to strengthen East Lyon's economic development. As a result, the metropolitan status quo has been preserved and the social division that marks Lyon's suburbs has been reinforced (Rousseau, 2015).

All this is possible because densification and compactness are 'chaotic concepts' (Martin and Sunley, 2003). Beyond very general and consensual ideas and notions, these concepts can be associated with very different types, processes and scales of urban transformation. Thus, anti-sprawl and pro-densification policies can be implemented in different ways, depending on the municipality's profile. They can be used differently to maximise the interests of both residents and their elected representatives. This consolidates the consensus on urban compactness, at least within the metropolitan core: why oppose an imperative head on, when it allows a high degree of freedom? Yet, the consensus is superficial and may simply be a deceptive compromise. It is important to look beyond the apparent consensus to grasp the local political dimensions that characterise the fight against urban sprawl. In so doing, this paper contributes to the ongoing critical discussion about the depoliticisation of issues associated with the rise of consensual discourses on sustainable development (Béal et al., 2011; Pinson and Rousseau, 2011; Swyngedouw, 2009).


## Declaration of conflicting interests

The author(s) declared no potential conflicts of interest with respect to the research, authorship, and/or publication of this article.

## Funding

The author(s) disclosed receipt of the following financial support for the research, authorship, and/or publication of this article: The most recent part of this research was funded by the French National Agency for Research (ANR), with the project Géopolitique de la Lutte contre l'Étalement Urbain (GELULE, ANR-16-CE22-0001).

## ORCID iD

Eric Charmes  <https://orcid.org/0000-0002-4171-1701>

## Notes

1. Functional dependency is measured by the intensity of commuting.
2. For more details, see Scot agglomération lyonnaise 2030 (2020).
3. The figures in this paragraph come from the Greater Lyon website, available at: [www.grandlyon.com/metropole/habitat-et-logement.html](http://www.grandlyon.com/metropole/habitat-et-logement.html) (accessed July 2020).
4. Greater Lyon was an inter-municipal structure comprising 59 municipalities until the end of 2014. The structure became a fully administrative government called 'Metropole de Lyon' in 2015. The Metropole is governed just like any other 'municipality'. It is unique in France. This administrative status includes direct universal suffrage for election of the representative body at the metropolitan level.
5. The European Union does not have a significant role, apart from providing general recommendations to fight sprawl.
6. For more details see: Agences d'urbanisme de Lyon et Saint-Etienne (2015).

## References

- Agences d'urbanisme de Lyon et Saint-Etienne (2015) Dynamiques de métropolisation. *Repères* March.

- Amarouche M and Charmes E (2019) L'Ouest lyonnais et la lutte contre l'étalement urbain. Le 'village densifié' comme compromis entre une politique nationale et des intérêts locaux. *Géoconfluences*. Available at: <http://geoconfluences.ens-lyon.fr/informations-scientifiques/dossiers-regionaux/lyon-metropole/articles-scientifiques/villages-densifies-lutte-etalement-urbain> (accessed 27 April 2020).
- Angelo H and Wachsmuth D (2015) Urbanizing urban political ecology: A critique of methodological cityism. *International Journal of Urban and Regional Research* 39(1): 16–27.
- Authier JY, Grafmeyer Y, Mallon I, et al. (2010) *Sociologie de Lyon*. Paris: La Découverte.
- Bacqué MH, Charmes E, Launay L and Vermeersch S (2016) Des territoires entre ascension et déclin: Trajectoires sociales dans la mosaïque périurbaine *Revue française de sociologie* 57(4): 681–710.
- Béal V, Gauthier M and Pinson G (2011) *Le développement durable changera-t-il la ville? Le regard des sciences sociales*. Saint-Etienne: Presses de l'Université de Saint-Etienne.
- Bouba-Olga O and Grossetti M (2019) Le récit métropolitain: Une légende urbaine. *L'Information géographique* 83(2): 72–84.
- Bouron JB (2019) Atlas de Lyon. In: Lyon, espaces et échelles d'une métropole européenne. *Géoconfluences*. Available at: <http://geoconfluences.ens-lyon.fr/informations-scientifiques/dossiers-regionaux/lyon-metropole/outils-et-ressources/lyon-atlas-du-dossier> (accessed 24 April 2020).
- Bovet J, Reese M and Köck W (2018) Taming expansive land use dynamics. Sustainable land use regulation and urban sprawl in a comparative perspective. *Land Use Policy* 77: 837–845.
- Bruegmann R (2005) *Sprawl. A Compact History*. Chicago, IL: University of Chicago Press.
- Charmes E (2005) *La vie périurbaine face à la menace des gated communities*. Paris: L'Harmattan.
- Charmes E (2011) *La ville émietlée. Essai sur la clubbisation de la vie urbaine*. Paris: Presses universitaires de France.
- Charmes E (2019) *La revanche des villages. Essai sur la France périurbaine*. Paris: Seuil.
- Charmes E and Keil R (2015) The politics of post-suburban densification in Canada and France. *International Journal of Urban and Regional Research* 39(3): 581–602.
- Charmes E and Rousseau M (2014) Le pavillon et l'immeuble: Géopolitique de la densification dans la région métropolitaine de Lyon. *Géographie Economie Société* 16(2): 155–181.
- Cochez N, Durieux E and Levy D (2015) Vulnérabilité énergétique. Loin des pôles urbains, chauffage et carburant pèsent fortement dans le budget. *Insee Première* 1530.
- Costet C (2020) Quel avenir pour les marchés immobiliers hors des métropoles? Interview with E Charmes. *Fonciers en débat*. Available at: <https://fonciers-en-debat.com/entre-lutte-contre-le-talement-urbain-et-revitalisation-des-centres-villes-quel-avenir-pour-les-marches-immobiliers-hors-des-metropoles/> (accessed 25 June 2020).
- Davidson M and Lees L (2010) New-build gentrification: Its histories, trajectories, and critical geographies. *Population, Space and Place* 16(5): 395–411.
- De Souza ML (2016) Urban eco-geopolitics: Rio de Janeiro's paradigmatic case and its global context. *City* 20(6): 1–21.
- Depraz S (2019) La géographie est-elle une science engagée? Fracture(s) territoriale(s) et gilets jaunes. *Historiens et géographes, Association des professeurs d'histoire et de géographie* 446: 25–29.
- Desage F, Morel-Journel C and Sala Pala V (2014) *Le Peuplement comme politiques*. Rennes: PUR.
- Dikeç M (2011) *Badlands of the Republic: Space, Politics and Urban Policy*. New York, NY: John Wiley & Sons.
- Duany A, Plater-Zyberk E and Speck J (2000) *Suburban Nation: The Rise of Sprawl and the Decline of the American Dream*. New York: North Point Press.
- Emelianoff C (2007) La ville durable: l'hypothèse d'un tournant urbanistique en Europe. *L'Information géographique* 71(3): 48–65.
- Fischel W (2004) An economic history of zoning and a cure for its exclusionary effects. *Urban Studies* 41(2): 317–340.
- Floch JM and Levy D (2011) Le nouveau zonage en aires urbaines de 2010. Poursuite de la périurbanisation et croissance des grandes aires urbaines. *INSEE Première* 1375: 4.

- Fonticelli C (2018) *Construire des immeubles au royaume des maisons. La densification des bourgs périurbains franciliens par le logement collectif: Modalités, intérêts et limites*. PhD Thesis, AgroParisTech, France.
- Fregolent L and Vettoretto L (2017) Land use regulation and social regulation: An unexplored link. Some reflections on the origins and evolution of sprawl in the Veneto 'città diffusa'. *Land Use Policy* 69: 149–159.
- Galimberti D, Lobry S, Pinson G, et al. (2014) La métropole de Lyon. Splendeurs et fragilités d'une machine intercommunale. *Hérodote* 154(3): 191–209.
- Gant R, Robinson G and Fazal S (2011) Land-use change in the 'edgelands': Policies and pressures in London's rural-urban fringe. *Land Use Policy* 28(1): 266–279.
- Genestier P (2019) Les gilets jaunes: Une question d'autonomie autant que d'automobile. *Le Débat* 2: 16–34.
- Geppert A (2017) Vae Victis! Spatial planning in the rescaled metropolitan governance in France. *Raumforsch Raumordn* 75: 225–241.
- Güney KM, Keil R and Üçoğlu M (2019) *Massive Suburbanization: (Re) Building the Global Periphery*. Toronto; Buffalo; London: University of Toronto Press.
- Herzog L (2014) *Global Suburbs: Urban Sprawl from the Rio Grande to Rio de Janeiro*. New York, NY: Routledge.
- Heynen NC, Kaika M and Swyngedouw E (2006) *In the Nature of Cities: Urban Political Ecology and the Politics of Urban Metabolism*. London; New York: Routledge.
- Jouve B (2001) Lyon recherche gouvernance urbaine désespérément. *Cahiers de géographie du Québec* 45(125): 287–292.
- Keil R (2017) *Suburban Planet: Making the World Urban from the Outside in*. Hoboken, NJ: John Wiley & Sons.
- Keil R and MacDonald S (2016) Rethinking urban political ecology from the outside in: Greenbelts and boundaries in the post-suburban city. *Local Environment* 21(12): 1516–1533.
- Kotkin J (2016) *The Human City: Urbanism for the Rest of Us*. Chicago, IL: Agate B2 Books.
- Krueger R and Gibbs D (2007) *The Sustainable Development Paradox: Urban Political Economy in the United States and Europe*. London: Guildford Press.
- Lelévrier C (2015) Casser le ghetto, chasser les pauvres? Les effets paradoxaux de la rénovation urbaine. In: Kirszbaum T (ed.) *En finir avec les banlieues, le désenchantement de la politique de la ville*. Paris: Éditions de l'Aube, pp. 115–128.
- Lévêque A (2018) Le gouvernement métropolitain de la banlieue lyonnaise à l'aune des politiques de transport urbain: Sociohistoire d'une relégation. *Métropoles*. Hors-série. Available at: <http://journals.openedition.org/metropoles/5865> (accessed 2 June 2020).
- Martin R and Sunley P (2003) Deconstructing clusters: Chaotic concept or policy panacea? *Journal of Economic Geography* 3(1): 5–35.
- Moore S (2013) What's wrong with best practice? Questioning the typification of new urbanism. *Urban Studies* 50(11): 2371–2387.
- Mouillart M and Vaillant V (2018) L'accession à la propriété des ménages pauvres et modestes. *L'observatoire de l'immobilier du Crédit foncier* 97: 34–47.
- Mustafa A, Van Rompaey A, Cools M et al. (2018) Addressing the determinants of built-up expansion and densification processes at the regional scale. *Urban Studies* 55(15): 3279–3298.
- Pinson G and Rousseau M (2011) Les systèmes métropolitains intégrés. Etat des lieux et problématiques. *Territoires* 2040 3: 28–48.
- Purcell M (2000) The decline of the political consensus for urban growth: Evidence from Los Angeles. *Journal of Urban Affairs* 22(1): 85–100.
- Quastel N, Moos M and Lynch N (2012) Sustainability-as-density and the return of the social: The case of Vancouver, British Columbia. *Urban Geography* 33(7): 1055–1084.
- Robert S, Fox D, Boulay G et al. (2019) A framework to analyse urban sprawl in the French Mediterranean coastal zone. *Regional Environmental Change* 19(2): 559–572.
- Rousseau M (2009) Re-imaging the city centre for the middle classes: Regeneration, gentrification and symbolic policies in 'loser cities'. *International Journal of Urban and Regional Research* 3(1): 770–788.



- Rousseau M (2012) Public mobility as the defining feature of the French post-industrial city. *Theory, Culture & Society* 29(6):125–145.
- Rousseau M (2014) Urban redevelopment and social (in) justice: Neoliberal strategies for ‘moving upmarket’ in shrinking cities. *justice spatiale and spatial justice* 6. Available at: [http://www.jssj.org/wp-content/uploads/2014/06/-Rousseau-Eng-n %6-jssj.pdf](http://www.jssj.org/wp-content/uploads/2014/06/-Rousseau-Eng-n%206-jssj.pdf) (accessed 2 December 2019).
- Rousseau M (2015) ‘Many rivers to cross’. Suburban densification and the social *status quo* in the Greater Lyon. *International Journal of Urban and Regional Research* 39(3): 622–632.
- Rousseau M and Harroud T (2019) Satellite cities turned to ghost towns? On the contradictions of Morocco’s spatial policy. *International Planning Studies* 24(3–4): 341–352.
- Sandberg LA, Wekerle GR and Gilbert L (2013) *The Oak Ridges Moraine Battles: Development, Sprawl, and Nature Conservation in the Toronto Region*. Toronto: University of Toronto Press.
- Schafran A and Wegmann J (2012) Restructuring, race, and real estate: Changing home values and the new California metropolis, 1989–2010. *Urban Geography* 33(5): 630–654.
- Schmidt S and Paulsen K (2009) Is open-space preservation a form of exclusionary zoning? The evolution of municipal open-space policies in New Jersey. *Urban Affairs Review* 45(1): 92–118.
- Scot agglomération lyonnaise 2030 (2020) Le développement territorial à l’œuvre. *Décryptage* 3.
- Soja E (1989) *Postmodern Geographies: The Reassertion of Space in Critical Social Theory*. New York: Verso.
- Swyngedouw E (2009) The antimonies of the post-political city: In search of a democratic politics of environmental production. *International Journal of Urban and Regional Research* 33(3): 601–620.
- Tommasi G (2018) La gentrification rurale, un regard critique sur les évolutions des campagnes françaises. *Géoconfluences*. Available at: <http://geoconfluences.ens-lyon.fr/informations-scientifiques/dossiers-regionaux/france-espaces-ruraux-periurbains/articles-scientifiques/gentrification-rurale> (accessed 28 November 2019).
- Touati A (2015) Hard and soft densification policies in the Paris city-region. *International Journal of Urban and Regional Research* 39(3): 603–612.
- Urban Task Force (1999) *Towards an Urban Renaissance*. London: Routledge.
- Wiel M (2010) *Etalement urbain et mobilité*. Paris: La Documentation française.
- Williamson T (2010) Beyond sprawl and anti-sprawl. In: Davies J and Imbroscio D (eds) *Critical Urban Studies: New Directions*. New York: State University of New York Press, pp. 165–182.
- Wollmann H (2012) Local government reforms in (seven) European countries: Between convergent and divergent, conflicting and complementary developments. *Local Government Studies* 38(1): 41–70.